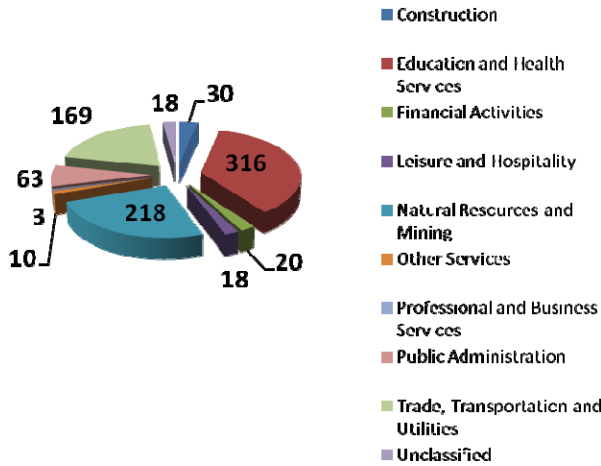


COCHRAN COUNTY LABOR MARKET PROFILE:

July 2010

Average Employment by Industry
Fourth Quarter 2009



Industry	Firms	Avg Emp	Total Wages	Avg Weekly Wages
Construction	4	30	\$202,767	\$520
Education and Health Services	7	316	\$2,661,816	\$648
Financial Activities	5	20	\$175,462	\$675
Leisure and Hospitality	5	18	\$40,036	\$174
Natural Resources and Mining	42	218	\$1,631,151	\$575
Other Services	5	10	\$66,130	\$492
Professional and Business Services	3	3	\$5,946	\$152
Public Administration	11	63	\$466,609	\$570
Trade, Transportation and Utilities	25	169	\$1,624,874	\$740
Unclassified	5	18	\$126,269	\$550

SOURCE: TWC Quarterly Census of Employment and Wages

May 2010	
Civilian Labor Force	1,499
Employment	1,383
Unemployment	116
Unemployment Rate	7.7

Source: TWC LAUS

The median age is 38 years, up from 35.9 years in 2007

Source: SitesonTexas.com, 2010

Cochran County Population	2009 Estimate	2014 Projection	Change 2009-2014
Total Population	2,901	2,488	-14.2%
Total Households	1,311	1,316	0.4%

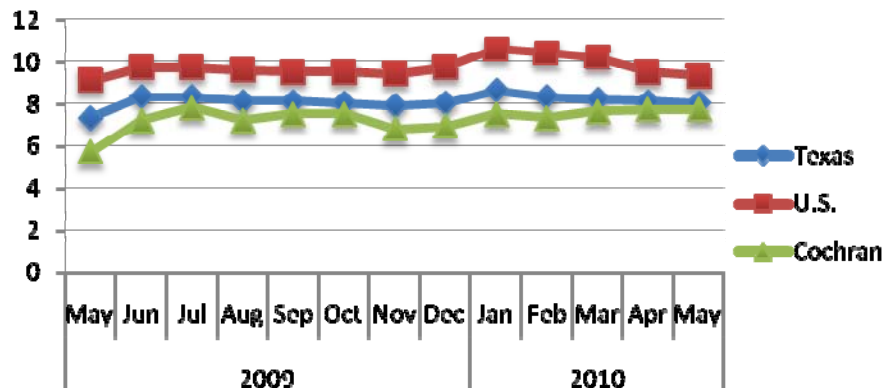
Cochran County Employers:

TWC indicates 116 business reporting units operating in Cochran County in the first quarter of 2008 with an average of 7.46 workers per unit.

Source: TWC SOCRATES CNP

Cochran County has been designated a Labor Surplus Area by the U. S. Department of Labor.

Local Area Unemployment Statistics

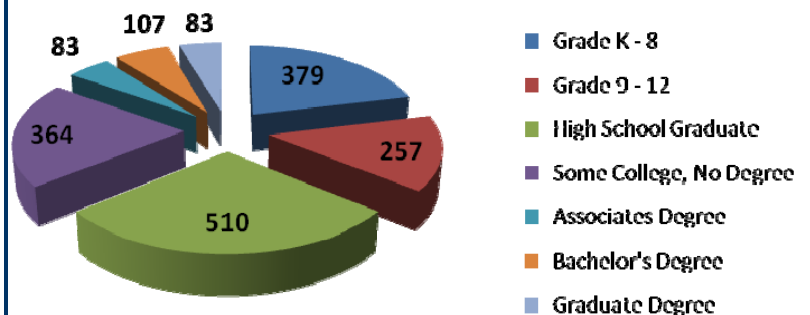


Source: TWC LAUS Not Seasonally Adjusted

Top Manufacturers in Cochran County:

- ❖ Texas Industrial Plating Inc
- ❖ Frontier Game Co
- ❖ Lynn's Originals
- ❖ Hydro Chemical Engineering Co

Educational Attainment of Population Over 25: 1,783 Persons



Source: SitesonTexas.com, 2010