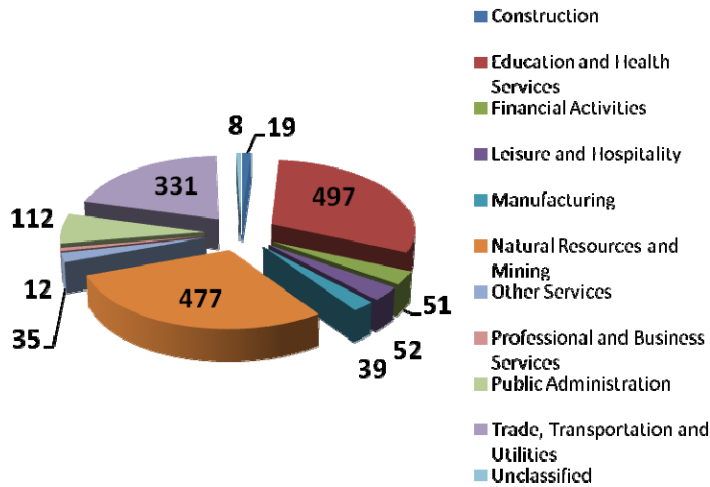


# CROSBY COUNTY LABOR MARKET PROFILE:

July 7, 2010

Average Employment by Industry Sector  
Fourth Quarter 2009



Industry	Firms	Avg Emp	Total Wages	Avg Weekly Wages
Construction	4	19	\$143,649	\$582
Education and Health Services	12	497	\$3,542,656	\$548
Financial Activities	11	51	\$419,662	\$633
Leisure and Hospitality	10	52	\$118,713	\$176
Manufacturing	3	39	\$281,760	\$561
Natural Resources and Mining	89	477	\$3,928,242	\$633
Other Services	13	35	\$185,346	\$411
Professional and Business Services	6	12	\$79,022	\$507
Public Administration	15	112	\$749,820	\$513
Trade, Transportation and Utilities	32	331	\$8,156,409	\$1,896
Unclassified	3	8	\$49,576	\$458

Source: TWC QCEW

May 2010	
Civilian Labor Force	2,766
Employment	2,543
Unemployment	223
Unemployment Rate	8.1

Source: TWC LAUS

The median age is estimated to be 36.5 years, up from 35.7 in 2007.

Source: SitesonTexas.com, 2010

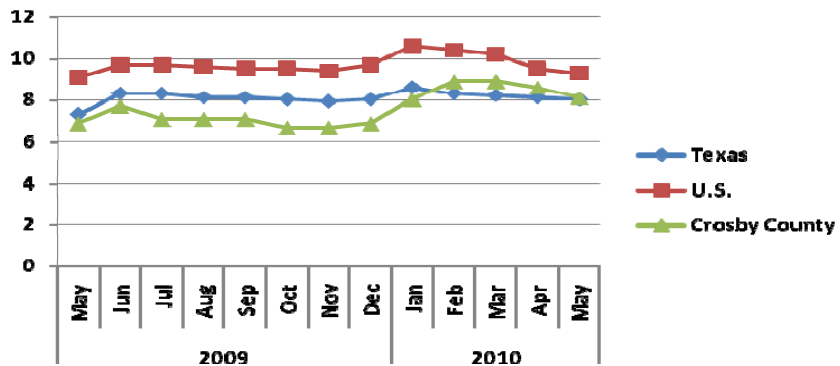
Crosby County Population	2009 Estimate	2014 Projection	Change 2009-2014
Total Population	5,811	4,829	16.9%
Total Households	2,552	2,611	2.3%

## Crosby County Employers:

TWC indicates 203 business reporting units operating in Crosby County in the first quarter of 2008 with an average of 7.10 workers per unit.

Source: TWC SOCRATES CNP

## Local Area Unemployment Statistics

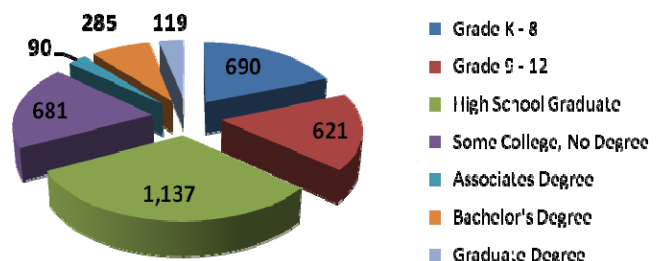


Source: TWC LAUS Not Seasonally Adjusted

## Top Manufacturers in the Crosby County Region:

- ❖ Lorenzo Textile Mills
- ❖ Rule Coop Gin and Elevator
- ❖ Trinity Co
- ❖ Crosby County Pump Company
- ❖ Lorenzo Pump & Machine

## Educational Attainment of Population Over 25: 3,623 Persons



Source: SitesonTexas.com, 2010