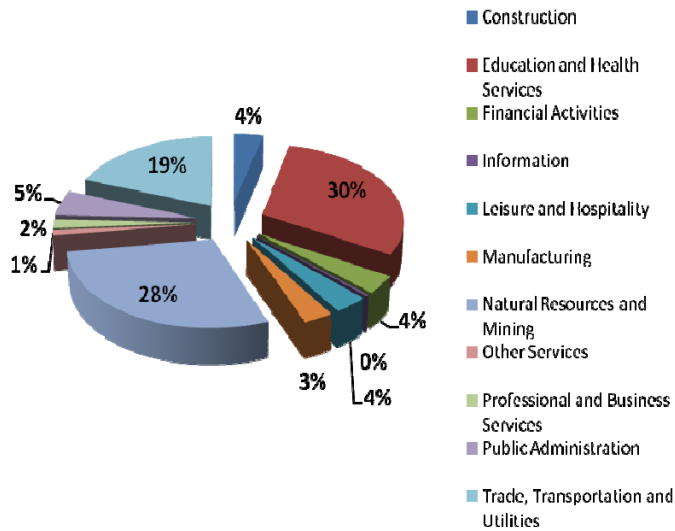


# FLOYD COUNTY LABOR MARKET PROFILE:

July 7, 2010

Average Employment by Industry  
Fourth Quarter 2009



| Industry                            | Firms | Avg Emp | Total Wages | Avg Weekly Wages |
|-------------------------------------|-------|---------|-------------|------------------|
| Construction                        | 18    | 73      | \$475,062   | \$503            |
| Education and Health Services       | 13    | 593     | \$4,655,930 | \$604            |
| Financial Activities                | 15    | 74      | \$622,882   | \$647            |
| Information                         | 3     | 6       | \$81,863    | \$1,111          |
| Leisure and Hospitality             | 12    | 71      | \$197,593   | \$215            |
| Manufacturing                       | 9     | 62      | \$541,306   | \$672            |
| Natural Resources and Mining        | 121   | 569     | \$4,925,600 | \$666            |
| Other Services                      | 12    | 24      | \$134,327   | \$425            |
| Professional and Business Services  | 14    | 36      | \$300,892   | \$637            |
| Public Administration               | 13    | 104     | \$848,682   | \$628            |
| Trade, Transportation and Utilities | 45    | 382     | \$3,047,131 | \$614            |

SOURCE: TWC Quarterly Census of Employment and Wages

| May 2010             |       |
|----------------------|-------|
| Civilian Labor Force | 3,101 |
| Employment           | 2,843 |
| Unemployment         | 258   |
| Unemployment Rate    | 8.3   |

Source: TWC LAUS

The median age is 39.4 years, up from 36.8 in 2007.

Source: SitesonTexas.com, 2010

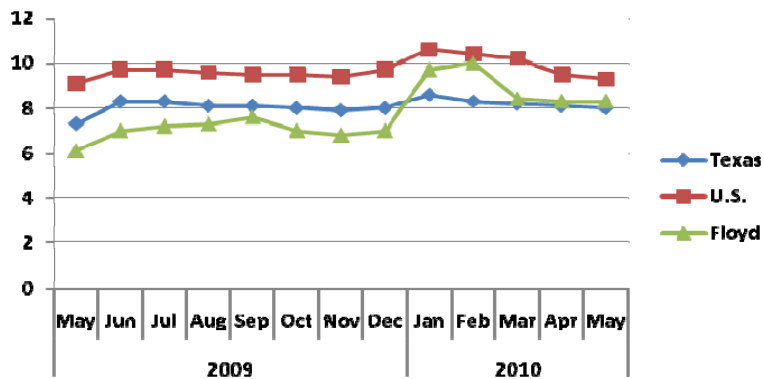
| FLOYD County Population | 2009 Estimate | 2014 Projection | Change 2009-2014 |
|-------------------------|---------------|-----------------|------------------|
| Total Population        | 6,184         | 5,214           | -15.7%           |
| Total Households        | 2,741         | 2,736           | -0.2%            |

## FLOYD County Employers:

TWC indicates 279 business reporting units operating in Floyd County in the first quarter of 2008 with an average of 6.5 workers per unit.

Source: TWC SOCRATES CNP

Local Area Unemployment Statistics

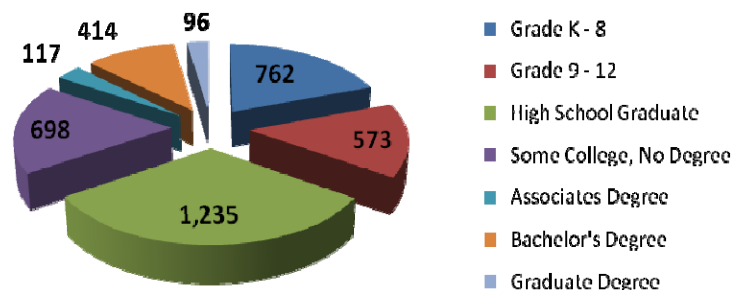


Source: TWC LAUS Not Seasonally Adjusted

## Top 10 Manufacturers for the FLOYD County Region:

- Agro Distribution
- D L Industries Inc
- Debruce Ag Svc
- Don Hardy Race Cars Inc
- Kaleidoscope
- Lockney Meat Co
- Texas Crusher Systems Inc

## Educational Attainment of Population Over 25: 3,895 Persons



Source: SitesonTexas.com, 2010