

KING COUNTY LABOR MARKET PROFILE:

UPDATED JANUARY 4, 2008

Agricultural Employers in Guthrie,
Texas:

6666 RANCH
RANCH TRIANGLE
W & W FOSTER RANCH

Industry	Firms	Avg Emp	Total Wages	Avg Weekly Wages
Public Administration	9	32	\$213,532	\$513

Source: TWC Quarterly Census of Employment and Wages, includes covered employment only.

November 2007

Civilian Labor Force	149
Employment	142
Unemployment	7
Unemployment Rate	4.7

Source: TWC LAUS

The median age is
39.3 years.

Source: SitesonTexas.com, 2007

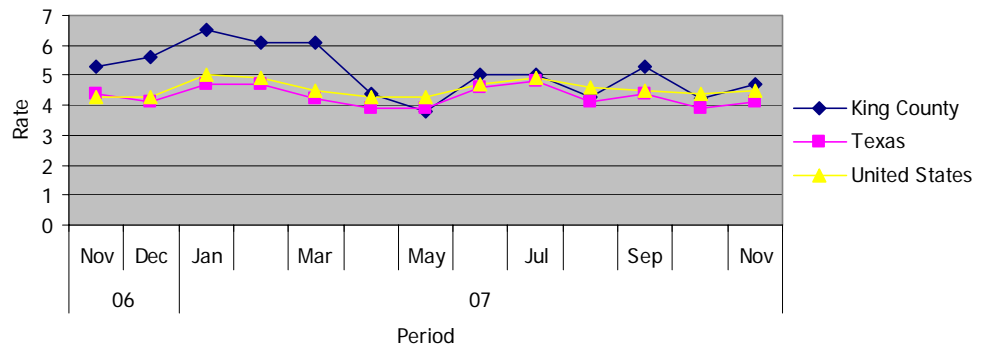
King County Population	2007 Estimate	2012 Projection
Total Population	307	285
Total Households	112	115

King County Employers:

TWC indicates 18 business reporting units operating in King County in the first quarter of 2007 with an average of 9.28 workers per unit.

Source: TWC SOCRATES CNP

Unemployment Rates in King County for 2006/2007



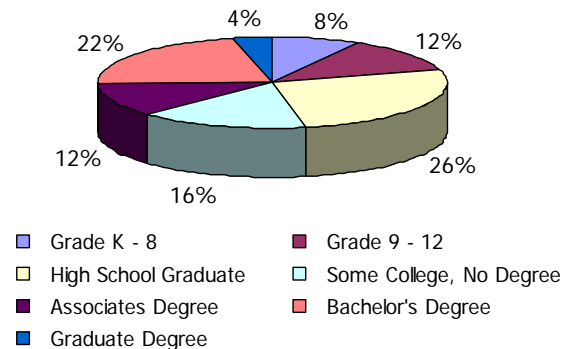
Source: TWC LAUS Not Seasonally Adjusted

Largest Employers in King County:

6666 RANCH HEADQUARTERS
6666 RANCH HORSE DIV
GUTHRIE COMMON SCHOOL DIST
WEST TEXAS SUPERQUICK
COMMUNITY BUILDING
6666 SUPPLY HOUSE.
KING COUNTY EXTENSION AGENT

Occupational Categories	Count
Mgmt., Professional Occs.	49
Service Occupations	21
Sales and Office Occupations	30
Farming/Fishing/Forestry Occs.	27
Constr., Extraction Occs.	13
Production, Transport. Occs.	9

Educational Attainment of Population Over 25: 188 Persons



Source: SitesonTexas.com