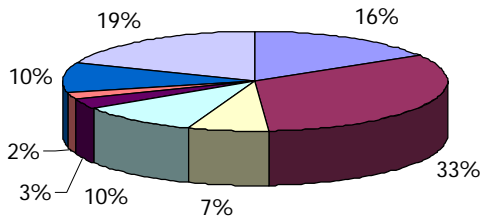


MOTLEY COUNTY LABOR MARKET PROFILE:

UPDATED JANUARY 4, 2008

Average Employment by Industry
Second Quarter 2007



- Construction
- Education and Health Services
- Leisure and Hospitality
- Natural Resources and Mining
- Other Services
- Professional and Business Services
- Public Administration
- Trade, Transportation and Utilities

Industry	Firms	Avg Emp	Total Wages	Avg Weekly Wages
Natural Resources and Mining	13	33	\$170,542	\$398
Construction	11	53	\$331,173	\$484
Trade, Transportation and Utilities	9	61	\$288,314	\$364
Professional and Business Services	3	7	\$29,194	\$306
Education and Health Services	5	104	\$555,791	\$412
Leisure and Hospitality	6	22	\$67,355	\$239
Other Services	5	11	\$37,153	\$252
Public Administration	11	31	\$180,753	\$449

SOURCE: TWC Quarterly Census of Employment and Wages

November 2007	
Civilian Labor Force	612
Employment	580
Unemployment	32
Unemployment Rate	5.2

Source: TWC LAUS

The median age is 47.1 years.

Source: SitesonTexas.com, 2007

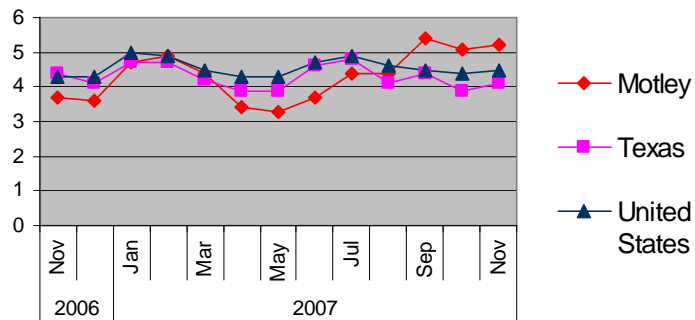
MOTLEY County Population	2007 Estimate	2012 Projection
Total Population	1,241	1,159
Total Households	624	642

MOTLEY County Employers:

TWC indicates 62 business reporting units operating in Motley County in the first quarter of 2007 with an average of 5.37 workers per unit.

Source: TWC SOCRATES CNP

Unemployment Rate in Motley County 2006-2007

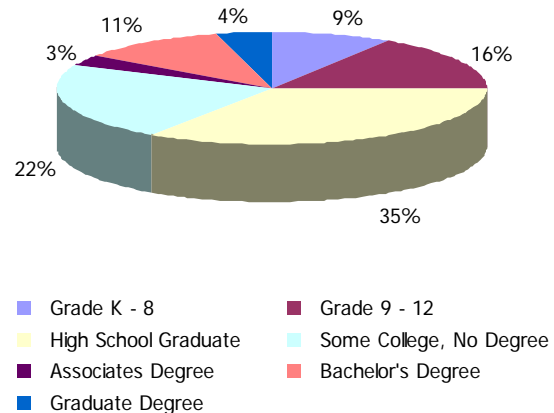


Source: TWC LAUS Not Seasonally Adjusted

Top 4 Manufacturers for the Motley County Region:

- ❖ Rinker Materials
- ❖ Thacker Jewelry Co
- ❖ Moore Maker Inc
- ❖ Knowles-Taylor Cotton Co Inc

Educational Attainment of Population Over 25: 870 Persons



Source: SitesonTexas.com